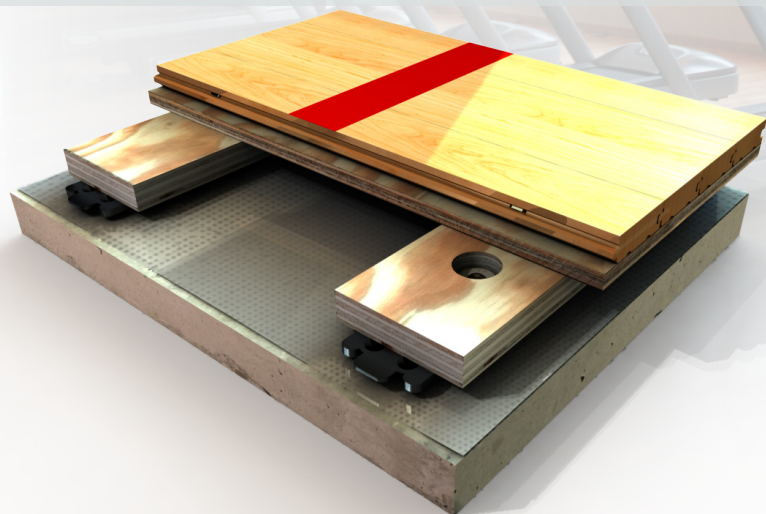


# AIR-CHANNEL® STAR

(WITH SUBFLOOR)



*STABLE. STRONG. SECURE.  
EVEN IN THE TOUGHEST CONDITIONS*



Robbins Air-Channel Star system combines anchored laminated sleepers to provide a system with dimensional stability and superior performance. The Air-Channel Star sleepers are laminated and engineered to be less susceptible to physical changes due to moisture compared to solid softwood sleepers. Air-Channel Star is a proven performer and an excellent choice for your gymnasium project.

- *Wide-body, low-profile, engineered sleeper anchored uniformly to concrete substrate for enhanced stability.*
- *Engineered sleeper enhances performance, flexibility and uniformity and provides dramatic improvement over softwood subfloor components.*
- *Robbins' patented "Posi-Anchor"™ built-in depth stop prevents shockpad over-compression, providing uniformity and stability.*
- *Optional 7/16" (11mm) resilient EPDM Bio-Pad,™ for shock absorption and vibration control.*
- *Continuous subfloor provides uniformity and strength for large bleacher loads and portable backstops.*
- *DIN-certified, meets or exceeds all six DIN 18032-2 criteria for ball bounce, shock absorption, deflection, area of deflection, rolling load and surface friction*

**Robbins**   
SPORTS SURFACES®

robbinsfloor.com | 1.800.543.1913

Robbins, Inc. | 4777 Eastern Avenue | Cincinnati, OH 45226

MAPLE FLOORING SYSTEMS

# AIR-CHANNEL® STAR (WITH SUBFLOOR)



## Product Specifications

**System Type** Anchored Resilient Sleeper/Subfloor

**Slab Depression**  
 2 1/2" (64mm) with 25/32" (20mm) maple  
 2 3/4" (70mm) with 33/32" (26mm) maple

**Surface- MFMA Northern Hard Maple** Robbins Continuous Strip® XL (FJ)

**Anchorage** Concrete Anchor & Sleeve

**Vapor Barrier** 6 MIL Polyethylene

**Subfloor Construction** 7/8" thick wide body laminated sleeper

**Resilience Layer** 7/16" Resilient Pad

**LEED Contributions** MR credit 4, 5, & 7  
 IEQ 4.1, 4.2, 4.3, 4.4

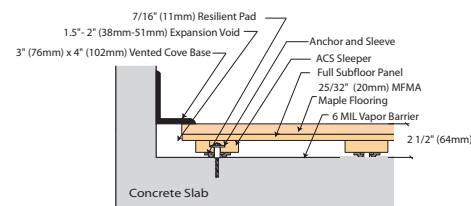
**FSC® Lumber Available**  
 \*Credits are based on products selected and location of facility

**Optional Construction** Contact a Robbins Representative for Alternative Systems

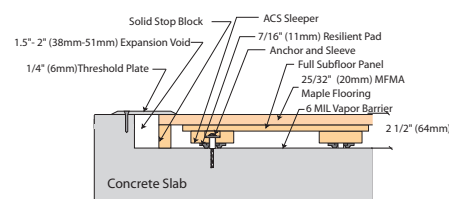
**Warranty** 1 year Industry Standard with optional Extended Warranty Program (*Egis Floorlife*)



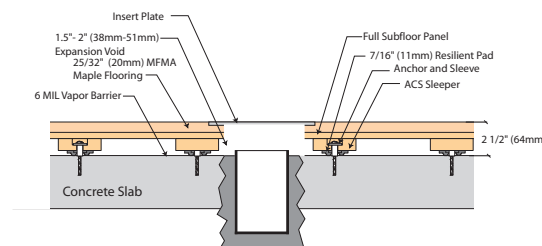
Wall View



Threshold View



Equipment View



### Air-Channel Family Reference Facilities

Oklahoma University  
 University of Mississippi  
 Robert F. Kennedy High School  
 Trump Tower- Panama  
 University of Illinois



robbinsfloor.com | 1.800.543.1913

Robbins, Inc. | 4777 Eastern Avenue | Cincinnati, OH 45226

All Rights Reserved. © 2018 Robbins, Inc. ACSSF201801